

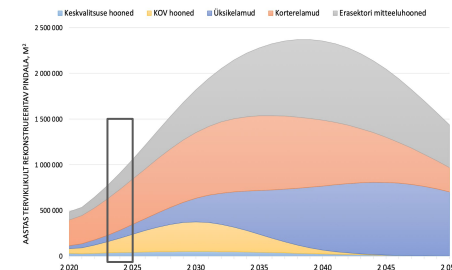
# Slender retrofit facade system

A modular volumetric facade system for the high quality renovation of the aging building stock.



We have entered the Renovation Wave. By 2050 we need to renovate 14 000 apartment buildings. We need to do it fast, efficiently and by increasing the quality of the living environment. We propose a modular facade system that can be easily configured for various projects using a specially developed digital platform.

We see mass renovation as an emerging market for architects using both design and process innovation developed at the timber architecture research centre PAKK in collaboration with Thermory.



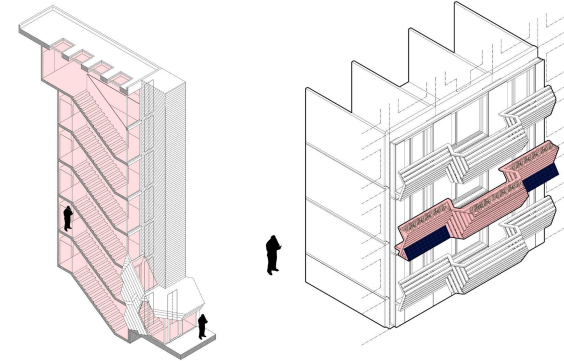
**The Renovation Wave.**  
Cumulative yearly renovation need in m2.  
Source: *Hoonete rekonstrueerimise pikaajaline strateegia*. TalTech, MKM. Tallinn. June 2020.



# Slender retrofit facade system

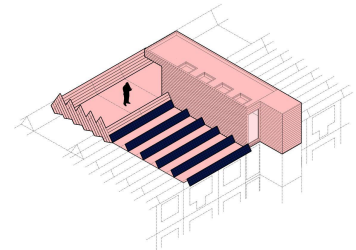
A modular volumetric facade system for the high quality renovation of the aging building stock.

Combined with the Digital Twin technology the reconfigurable facade system becomes a fully automated, scalable product ushering in the long awaited era of mass customisation in architecture.

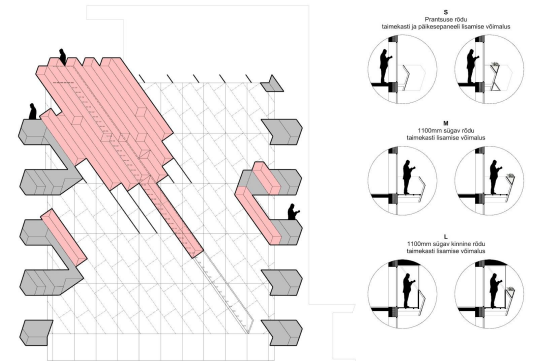


New access. A plug-in elevator and stair module with roof access

Balconies. Configurable extensions of the private domain to the outside



Roof Terrace. A terrace module is proposed as well as PV panel solutions



End Wall. The elements on the end wall can house vertical greenery and PV panels as well as provide an additional escape/access route.

